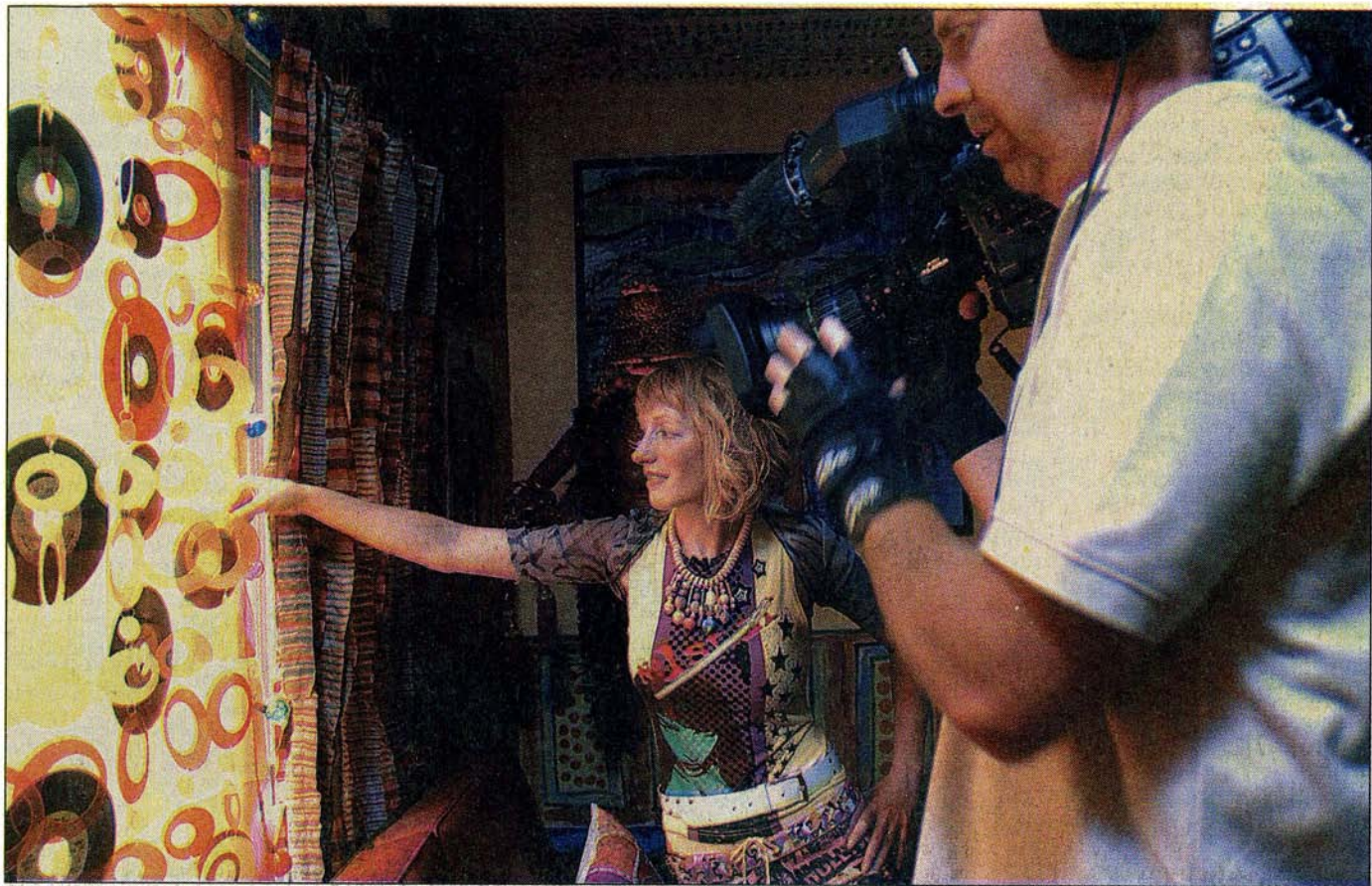


• OFFBEAT AMERICA •



Jason Rearick / The Citizen

Homeowner Jesse Kline shows off her plastic window covering/CD and record holder, for HGTV cameraman Brian Tiell Tuesday. The television channel is doing a feature on Greg Munno and Jesse Kline's house.



# Home is where the art is

## Kline's colorful Van Anden house to be featured on HGTV

JESSICA SOULE  
The Citizen

AUBURN — White picket fences won't do for Jesse Kline.

Her multi-colored fence rails and life-sized headless mannequin-turned-lamp are some of the features the Home and Garden Television network will include in a segment on the Auburn resident's home for its show "Offbeat America."

Kline and her husband, Greg Munno, decorated their two-story home on VanAnden Street from top to bottom and inside and out with funky paintings, sculptures and thrift-store finds.

"Being a decorator, being featured on HGTV is a feather in my cap," Kline said. "I want to spread the message that you can be creative with your house, and how important that is."

A cameraman and producer spent eight hours Tuesday shooting the highlights of the dwelling

where Kline grew up.

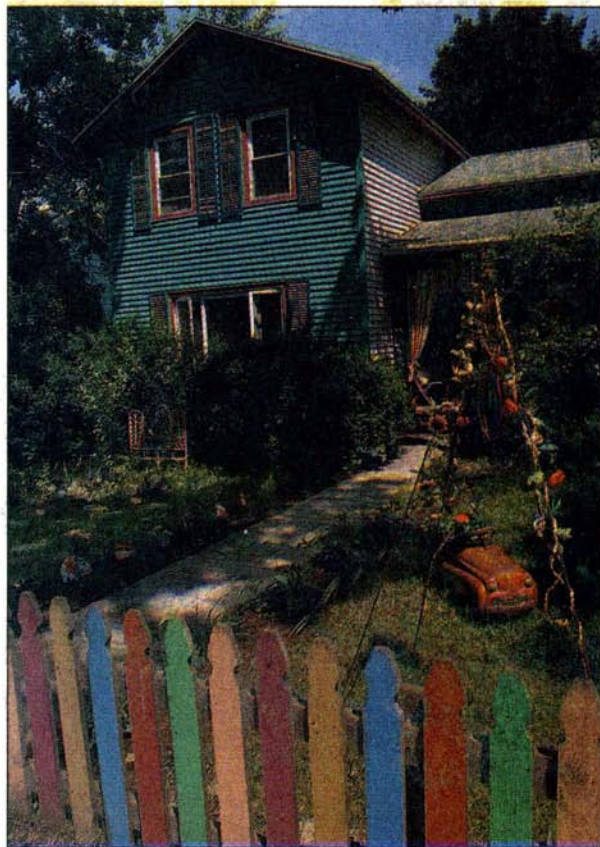
The show — which airs at 6 p.m. each Sunday — featuring the local home is slated to air later this summer. HGTV is distributed in 80 million U.S. homes.

"We could shoot just about anything in this house," said segment producer Tracy Wohlgenant.

Besides an episode of the show's third season, she took with her a few ideas for her own place — like a window shade made from two pieces of wax paper and feathers.

"I love the murals, they are really inspiring and you're literally surrounded by art," she added.

Kline, a professional decorator and creative consultant, heard the program's directors were looking for a vibrant and unusual residence to showcase in the area and sent them photos. Within six weeks, the network sent a team to film the home and learn the background.



Jason Rearick / The Citizen

Jesse Kline and Greg Munno's house, on Van Anden Street, is as colorful outside as it is inside.

See PROGRAM, A2